



Manchester Park Food Vendor in City Parks Appendix B: Maps of Designated Locations

Rec Center Lot (Day-Use)

557 N. Woodland St.
Manchester, TN 37355
Contact for reservations: (931) 728-0273

Maximum Number of PFVs: 4 (3 perpendicular parking)

Designated Area: The southeast area of the Rec Center Parking Lot. Each vendor will pull or back into spot and have the designated parking space adjacent to vehicle. PFV's may park perpendicular to parking spot if less than maximum occupancy.





Manchester Park Food Vendor in City Parks

Appendix B: Maps of Designated Locations

Rotary Park (Special Events)

557 N. Woodland St.
Manchester, TN 37355
Contact for Reservation: (931)728-0273

Maximum Number of PFVs: 20
Designated Area: The grass field





Manchester Park Food Vendor in City Parks Appendix B: Maps of Designated Locations

Fred Deadman Park (Day Use)

328 N. Woodland St.
Manchester, TN 37355
Contact for Reservation: (931)728-0273

Maximum Number of PFVs: 4 (3 perpendicular parking)
Designated Area: Parking Spaces North of Ada Wright Building. Each vendor will pull or back into spot and have the designated parking space adjacent to vehicle.





Manchester Park Food Vendor in City Parks Appendix B: Maps of Designated Locations

Fred Deadman Park (League/Tournament)

328 N. Woodland St.

Manchester, TN 37355

Contact for Reservation: (931)728-0273

Maximum Number of PFVs: 4 (3 perpendicular parking)

Designated Area: Parking Spaces North of Restrooms. Each vendor will pull or back into spot and have the designated parking space adjacent to vehicle. PFV's may park perpendicular to parking spot if less than maximum occupancy.





Manchester Park Food Vendor in City Parks Appendix B: Maps of Designated Locations

Dave King Park (Day-Use)

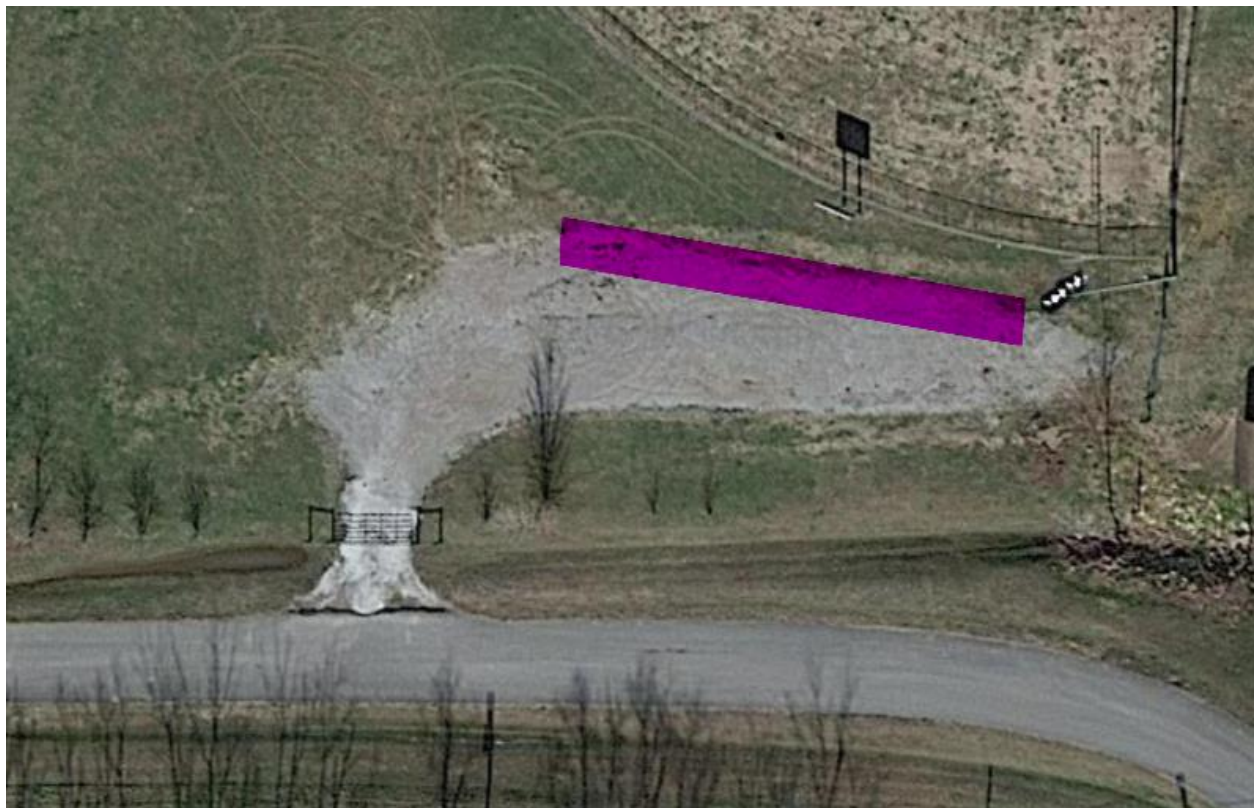
255 N. Waite St.

Manchester, TN 37355

Contact for Reservation: (931)728-0273

Maximum Number of PFVs: 4

Designated Area: Parking Spaces in the gravel pit.





Manchester Park Food Vendor in City Parks Appendix B: Maps of Designated Locations

Dave King Park (League/Tournament)

255 N. Waite St.

Manchester, TN 37355

Contact for Reservation: (931)728-0273

Maximum Number of PFVs: 4

Designated Area: Grass area between fields 8 & 9.





Manchester Park Food Vendor in City Parks Appendix B: Maps of Designated Locations

Soccer Complex (Day-Use)

541 McMinnville Hwy.

Manchester, TN 37355

Contact for Reservation: (931)728-0273

Maximum Number of PFVs: 3 (2 perpendicular parking)

Designated Area: Center Parking Spaces left, after the entrance. Each vendor will pull or back into spot and have the designated parking space adjacent to vehicle. PFV's may park perpendicular to parking spot if less than maximum occupancy.





Manchester Park Food Vendor in City Parks Appendix B: Maps of Designated Locations

Soccer Complex (Farmer's Market & League/Tournament)

541 McMinnville Hwy.
Manchester, TN 37355
Contact for Reservation: (931)728-0273

Maximum Number of PFVs: 4

Designated Area: Parking spaces East of the Restrooms. Each vendor will pull up to and make sales to the sidewalk.

